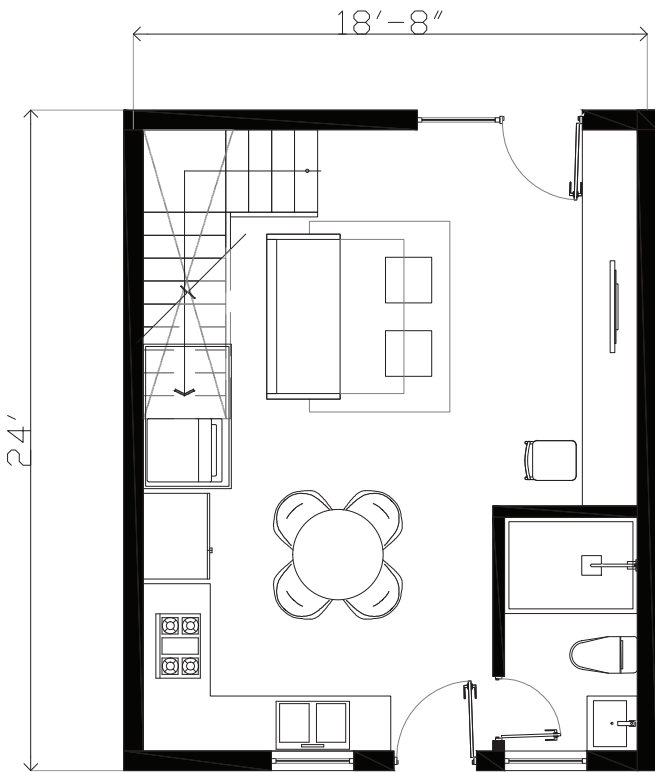




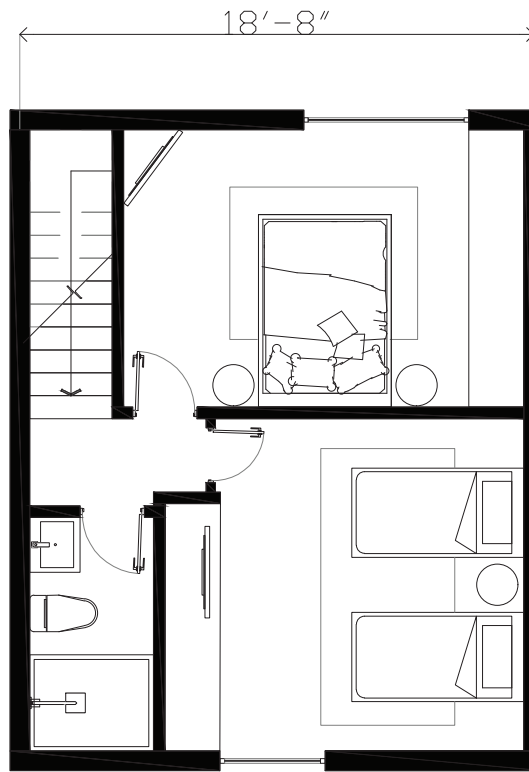
CONDO HOTEL
LINER UNIT

896.00 SQ. FT.

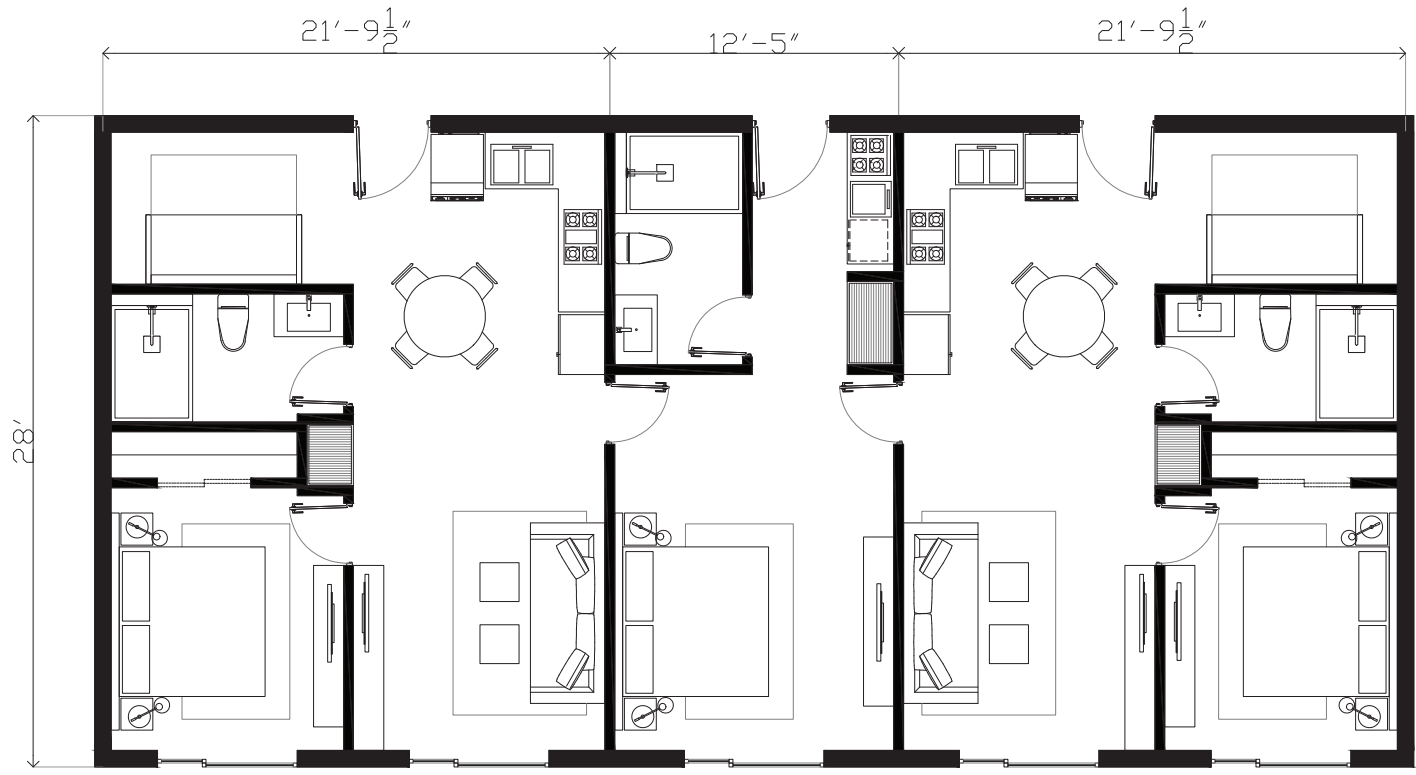
24 units



FIRST FLOOR



SECOND FLOOR



CONDO HOTEL
SUITE ONE BEDROOM + DEN

610.17 SQ. FT.
30 UNITS X 3 = 90

CONDO HOTEL
JUNIOR SUITE

347.67 SQ. FT.
12 UNITS X 3 = 36

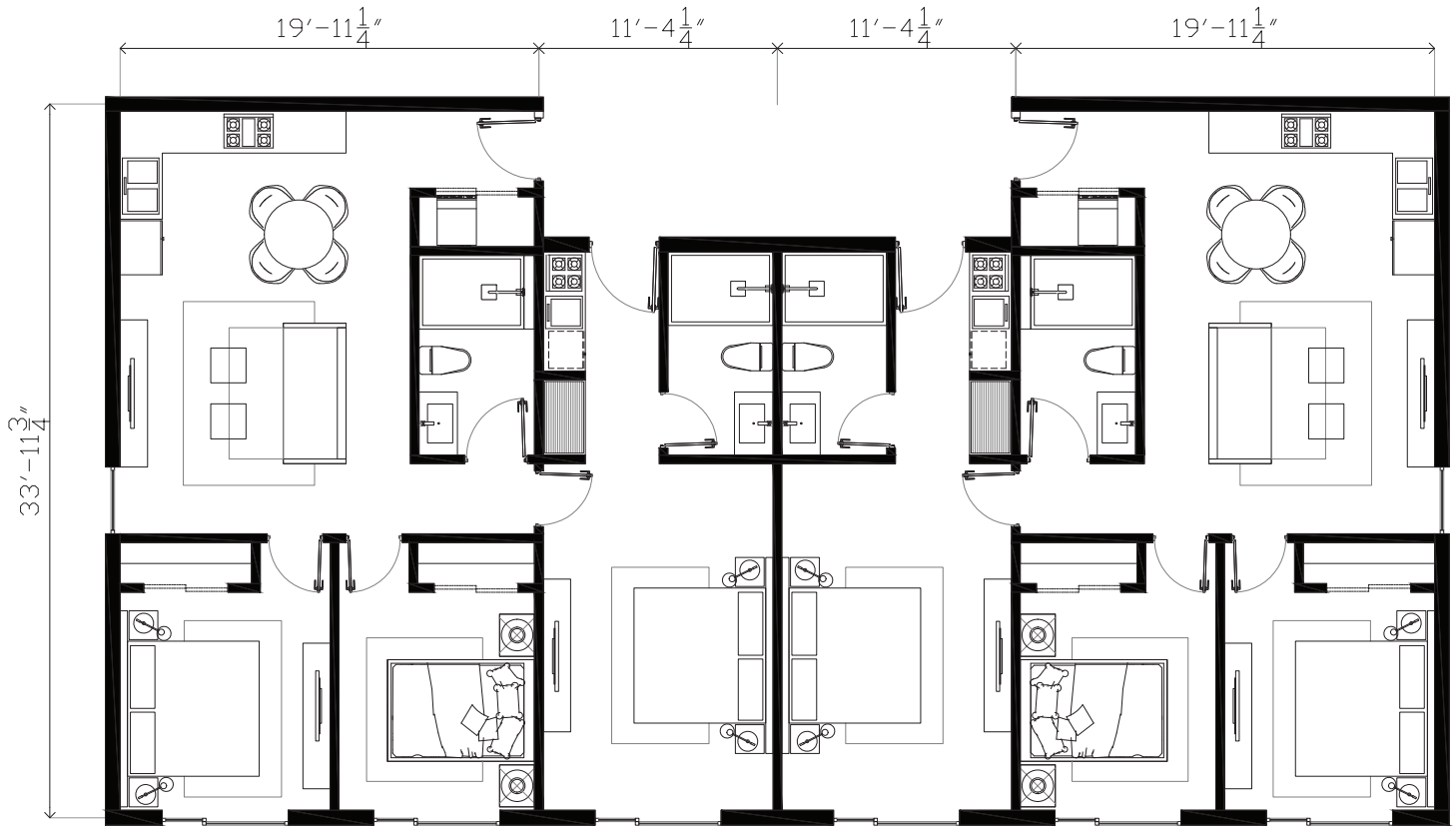
SUITE ONE BEDROOM + DEN

JUNIOR SUITE

SUITE ONE BEDROOM + DEN



Information contains in this brochure is believed to be accurate BUT NOT GUARANTEED. Oral representations cannot be relied upon as correctly starting representations of the Developer. For the correct representations, make reference to the purchase agreement and to the documents required by 718.503, Florida Statutes, to be furnished by a Developer to a buyer or lessee. The sketches, renderings, floor plans, graphic materials, feature plans, condos for sale, and specifications described herein are proposed only, and the Developer reserves the right to modify, revise, or withdraw any or all of the same in its sole description and without prior notice.



SUITE TWO BEDROOMS CORNER

JUNIOR SUITE CORNER

JUNIOR SUITE CORNER

SUITE TWO BEDROOMS CORNER



CONDO HOTEL
SUITE TWO BEDROOMS CORNER

709.3 SQ. FT.
4 UNITS X 3 =12

CONDO HOTEL
JUNIOR SUITE CORNER

317.92 SQ. FT.
4 UNITS X 3 =12



Information contains in this brochure is believed to be accurate BUT NOT GUARANTEED. Oral representations cannot be relied upon as correctly stating representations of the Developer. For the correct representations, make reference to the purchase agreement and to the documents required by 718.503, Florida Statutes, to be furnished by a Developer to a buyer or lessee. The sketches, renderings, floor plans, graphic materials, feature plans, condos for sale, and specifications described herein are proposed only, and the Developer reserves the right to modify, revise, or withdraw any or all of the same in its sole description and without prior notice.